



Neighborhood Watch Leader Meeting

January 2023

Agenda

Be Well

-

Program Survey Results

-

Crime Reporting Update

-

2022 Crime Numbers

-

Q&A with Lieutenants



NEWPORT BEACH POLICE DEPARTMENT

Survey Results & Program Updates

- Monthly Emails
- Calls for Service
 - Contact Sara if you have questions or need assistance navigating Calls for Service on the website. She can coordinate a phone or Zoom meeting to provide assistance.
- Stickers & Signs
 - Please email Sara a photo & location where a faded sign needs to be replaced.
- Hearing from other NW Leaders
- Virtual vs. In person Meetings



Crime Reporting Transition

UCR/SRS → NIBRS

- New System for reporting crime numbers to FBI
 - More offenses reported (vs. the hierarchy system used prior)
 - New crime categories captured (for example: gambling, bribery, society offenses)
 - Crimes categorized differently. Examples:
 - Robbery has been changed from violent crime to property crime.
 - Burglary from Motor Vehicle & Theft from Motor vehicle now separate categories
- Main Challenge: Comparing year over year numbers until we build up more data in this new system



Crime Reporting Transition

UCR/SRS

VIOLENT CRIME
HOMICIDE
VICTIM COUNT
RAPE
ROBBERY
AGGRAVATED ASSAULT
PROPERTY CRIME
RESIDENTIAL BURGLARY
GARAGE BURGLARY
COMMERCIAL BURGLARY
THEFT/LARCENY
BURG/THEFT FROM AUTO
BURG/THEFT FROM BOAT
AUTO THEFT
ARSON
THEFT BREAKDOWN
BIKE THEFT
BOAT THEFT
MAIL THEFT
PICK POCKET
SHOPLIFT
GRAND THEFT
PETTY THEFT

NIBRS

PERSON OFFENSE	PROPERTY OFFENSE	SOCIETY OFFENSE
HOMICIDE	ROBBERY	PORNOGRAPHY
SEX OFFENSES	BURGLARY	WEAPONS
FORCIBLE	RESIDENTIAL	ANIMAL CRUELTY
NON-FORCIBLE	GARAGE	NARCOTICS
ASSAULT	COMMERICAL	GAMBLING
AGGRAVATED	THEFT/LARCENY	PROSTITUTION
SIMPLE	VEHICLE	
INTIMIDATION	BIKE THEFT	
KIDNAPPING	MAIL THEFT	
HUMAN TRAFFICKING	PICK POCKET	
	SHOPLIFT	
	AUTO PARTS	
	OTHER	
	AUTO THEFT	
	ARSON	
	FRAUD	
	EMBEZZLEMENT	
	EXTORTION/BLACKMAIL	
	BRIBERY	
	COUNTERFEITING/FORGERY	
	VANDALISM	
	STOLEN PROPERTY	



The background image shows the Newport Beach Police Department building. In the foreground, there are two flags: the United States flag and the City of Newport Beach flag, which features a seal with a sailboat and the text 'CITY OF NEWPORT BEACH CALIFORNIA'. The building's facade is visible in the background, with the words 'POLICE' and 'DEPARTMENT' partially legible. A large number '870' is also visible on the building's exterior.

2022 Crime Numbers

Total 2022 Part 1 Crime (Violent & Property Crime)

Compared to 2021:

+7.1% 

Compared to 5 year average:

-6.4% 



2022 Property Crime Statistics

- Residential Burglaries
 - ↑ +14.7% vs. 2021
 - ↓ -5.6% vs. 5 year average

- Garage Burglaries
 - ↓ -2.2% vs. 2021
 - ↑ +9.2% vs. 5 year average

- Burglaries/Thefts from Vehicles
 - ↑ +1.6% vs. 2021
 - ↓ -18.9% vs. 5 year average

- Auto Theft
 - ↓ -11.2% vs. 2021
 - ↓ -4.7% vs. 5 year average

- Bike Theft
 - ↑ +14.0% vs. 2021
 - ↑ +30.8% vs. 5 year average

- Mail Theft
 - ↓ -10.8% vs. 2021
 - ↓ -14.1% vs. 5 year average



Crime Trends to be Aware Of



Pick Pockets

Garage Burglaries



Bike Thefts

Residential Burglaries



Pick Pocket Trends

YTD Pick Pocket Incidents

↑ **+125% vs. 2021**

(45 reports in 2022 vs. 20 in 2021)

↑ **+22.3% vs. 5 year average**

- Common locations:
 - Grocery stores
 - Bars/restaurants
- Targeting wallets and cell phones
- Distraction



Pick Pocket Prevention



- Carry a purse with a zipper & keep it zipped closed.
- Keep wallet/valuables at bottom of purse.
- Be aware when someone gets into your personal space.
- Keep valuables in your line of sight.
- After you pay, take a moment to make sure your wallet and purse are secured again.



Preventing Garage Burglaries



Parking Structures:

- Even the garage requires a remote or code to enter, treat your property as if it were an unsecured area (or on the street).
- Never leave any property unattended in your vehicle.
- Always lock your car.
- Secure bike with high-quality lock to something stationary.

Private Garages:

- Keep garage doors closed whenever you are not present.
- Remove garage door remote from your vehicle when parking outside your garage. Treat it like a key to your home.
- Keep your garage pedestrian doors locked.



Bike Theft Prevention



Project529

- Bicycle registration system
- Upload your contact info, your bike info & some photos of your bike.
- Free and takes about 5 minutes
- Used by NBPD and many of our neighboring agencies
- If your bike is stolen, it makes it easier for police to return to you if it's found.

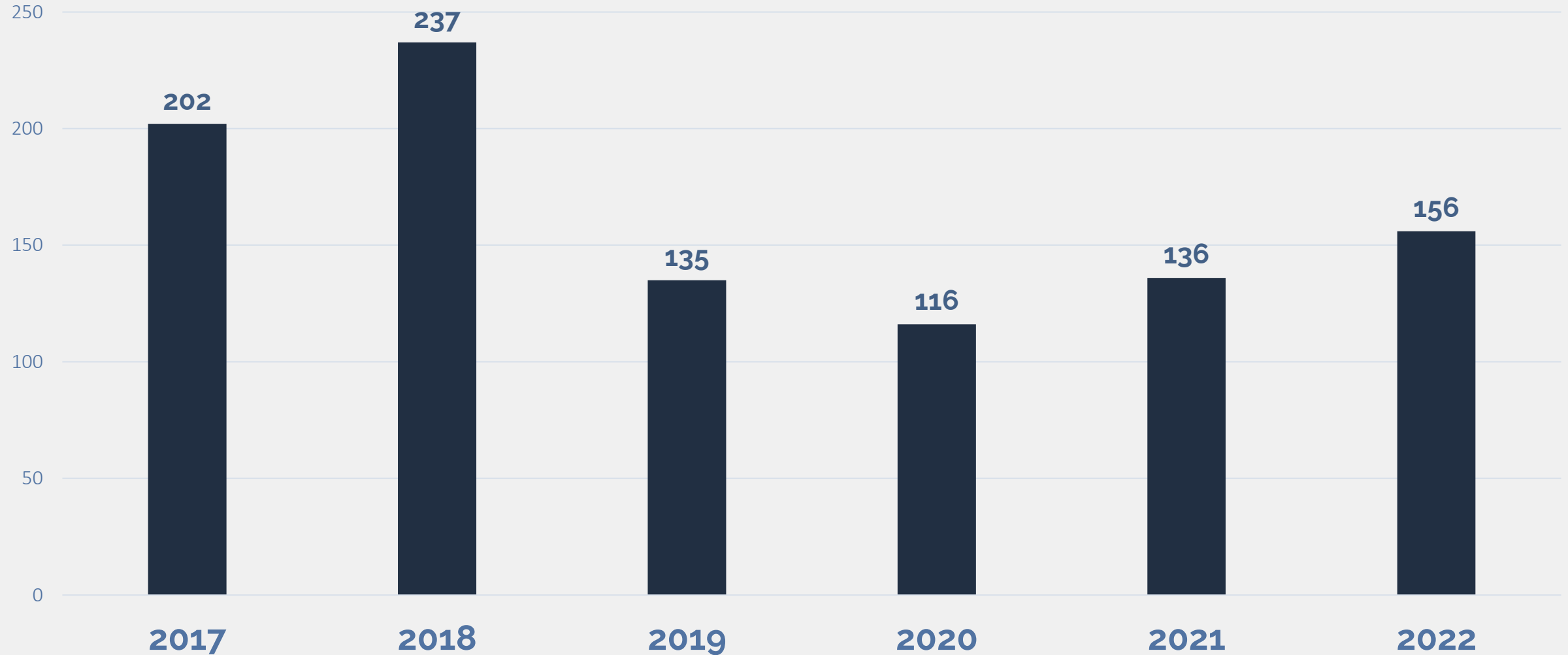
Bike Theft Prevention

- Use a high-quality lock designed for a bicycle and make sure you know how to use it properly. Cable locks are easily cut through with basic tools.
- Bikes should be locked to a stationary object in a secure area.
- Never leave your bike outside overnight – even if you lock it up (any lock can be defeated with enough time & the right tools)






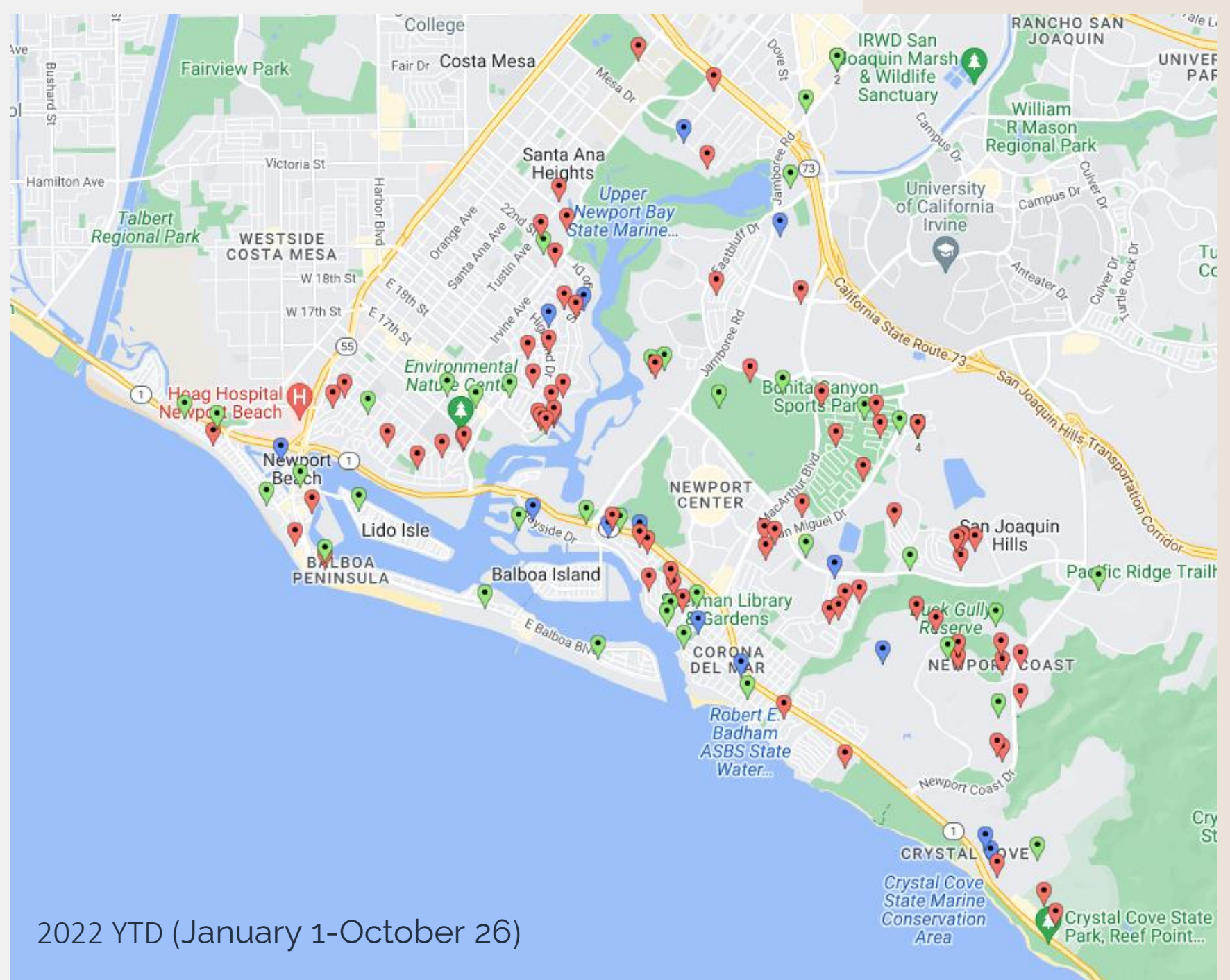
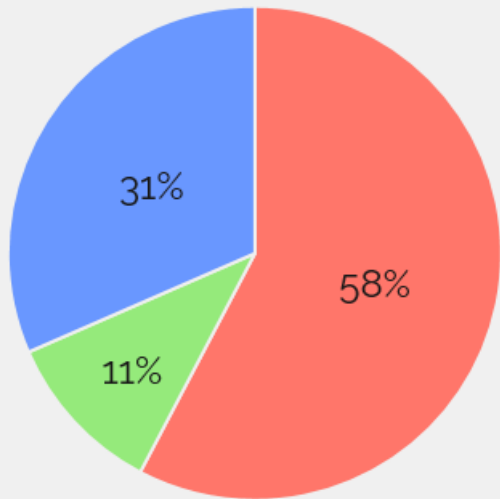
NEWPORT BEACH POLICE DEPARTMENT

2022 Residential Burglaries in Newport Beach



Residential Burglaries

-  Forced Entry
-  Attempted Forced Entry
-  No Forced Entry

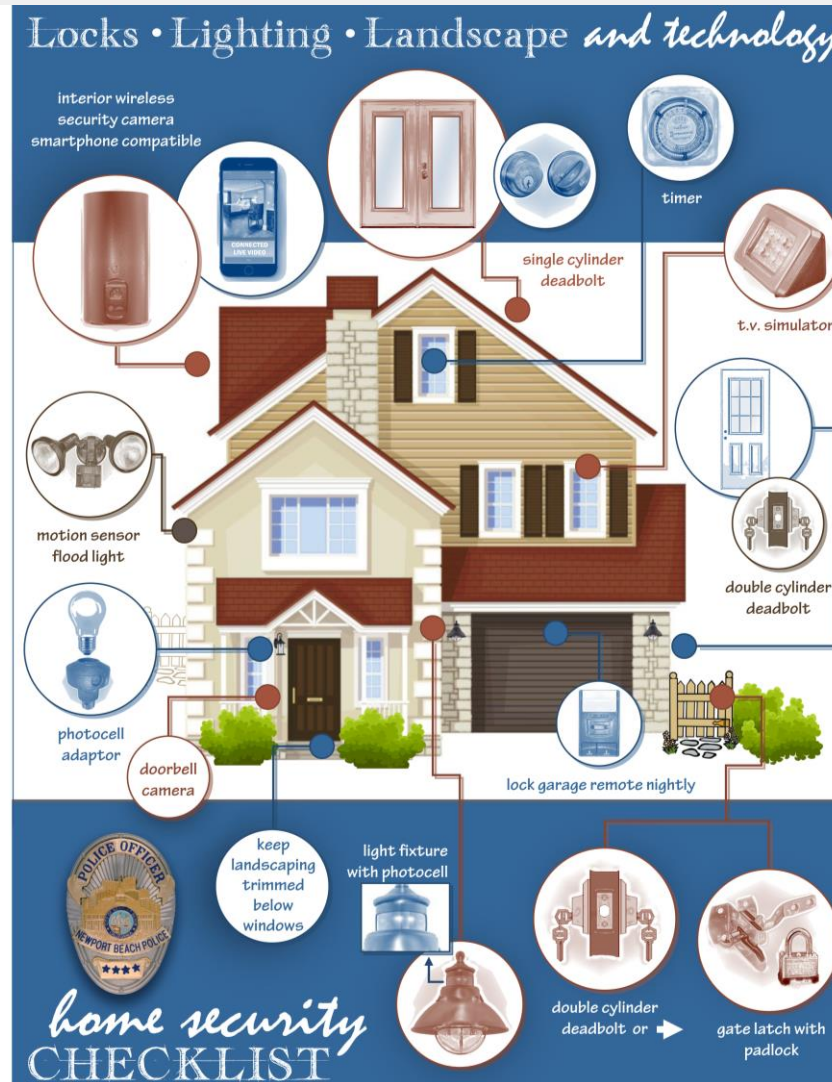


2022 YTD (January 1-October 26)

Residential Burglaries

Trends

- Unoccupied houses targeted
- Homes that back up to open areas (trails, hillsides, golf courses, etc.)
- Entering through side or back windows or glass doors
- Early evening hours: 5pm-11pm
- Mostly in Area 2, 3 & 4



Prevention

- Create the appearance that someone is home
- Motion sensor lights & cameras for backyard & sides of the home
- Keep backyard well lit with landscape lighting
- Set alarm anytime you leave the house
- Call on suspicious persons, vehicles or activity in your community



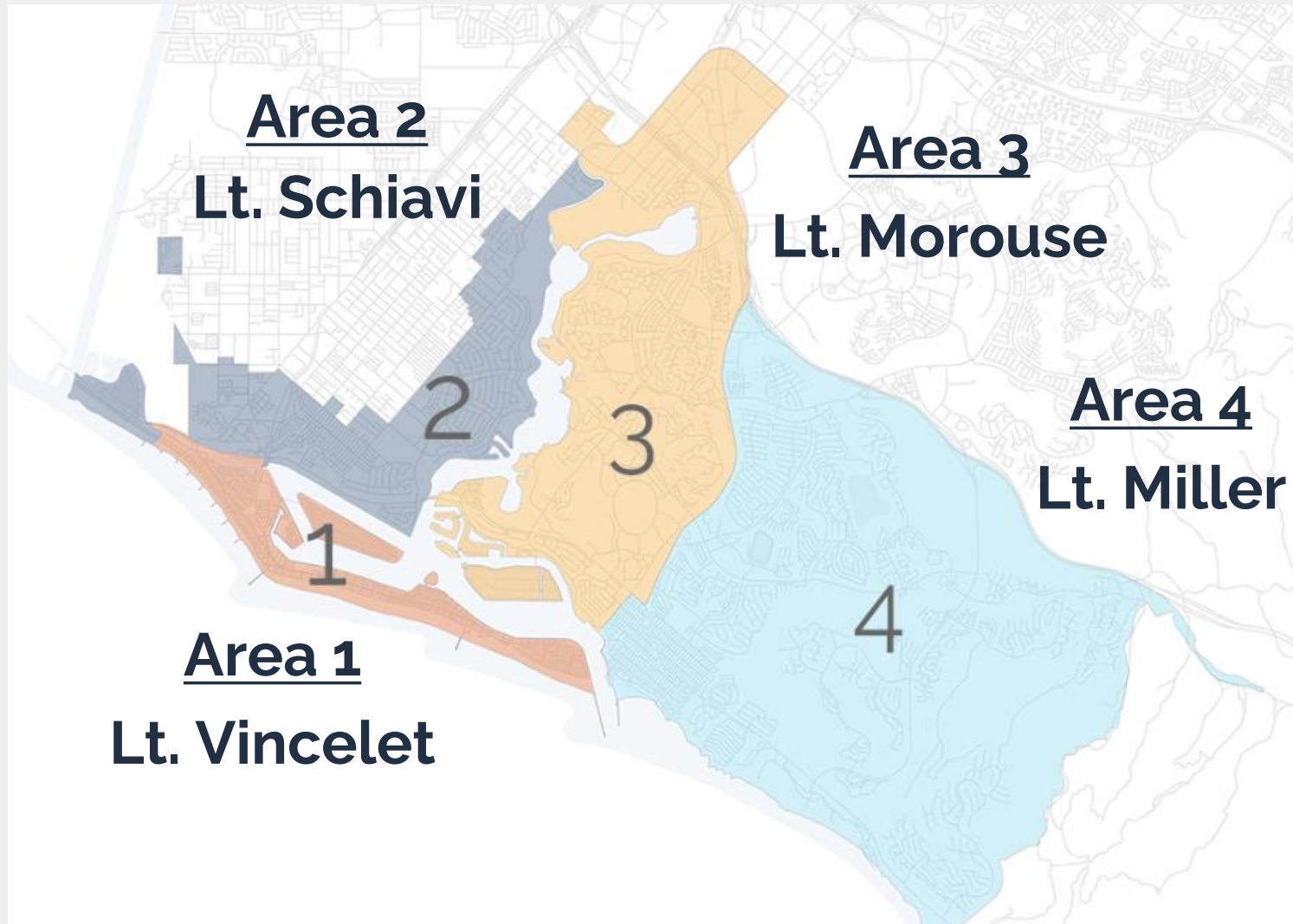
Reminders



- Nixle Alerts
- NBPD.org
 - Crime Prevention Tips
 - Calls for Service
- Vacation Checks
- Report Suspicious Activity



Area Lieutenants



The background image shows the Newport Beach Police Department building. A large American flag and the City of Newport Beach flag are flying on poles in the foreground. The building's facade features the words "POLICE DEPARTMENT" and the address "870".

QUESTIONS?